

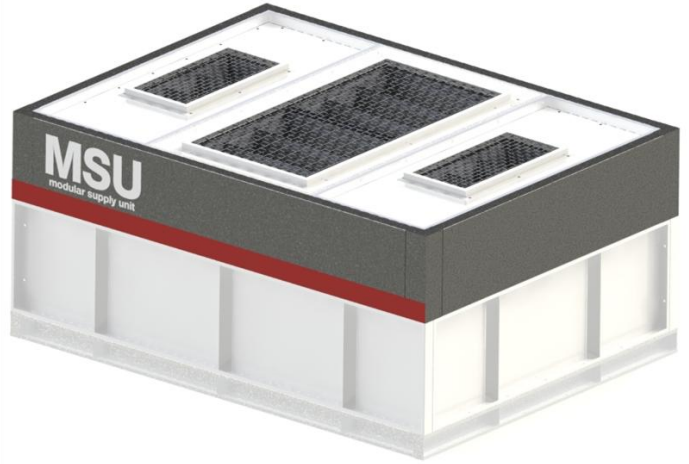
MSU

Modular Air Supply Unit

モジュラーエア供給ユニット

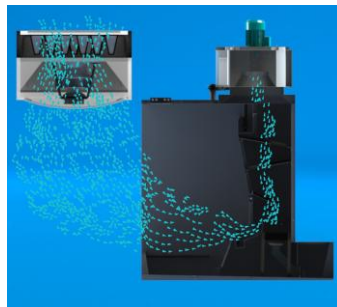
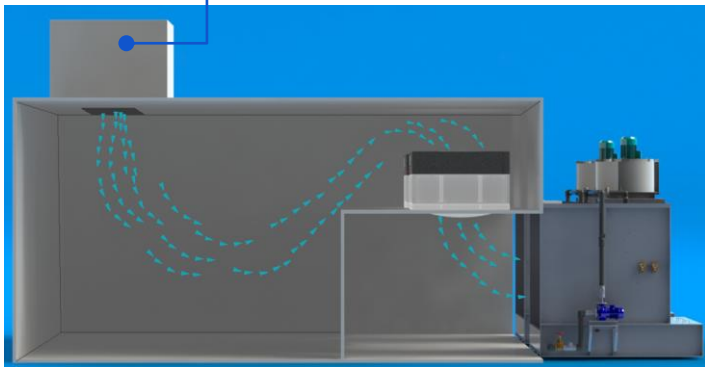
MSU is a Modular Supply Unit. The function of MSU is to supply clean air from outside to a spray booth in order to balance pressure inside. The unit is built in with a suction blower and 2-step of filters.

MSUはモジュラーを供給ユニットです
MSUの機能は、外部からスプレーブースに綺麗な空気を供給しています
内部の圧力
ユニットには吸引ブロワーと2段のフィルターが内蔵されています

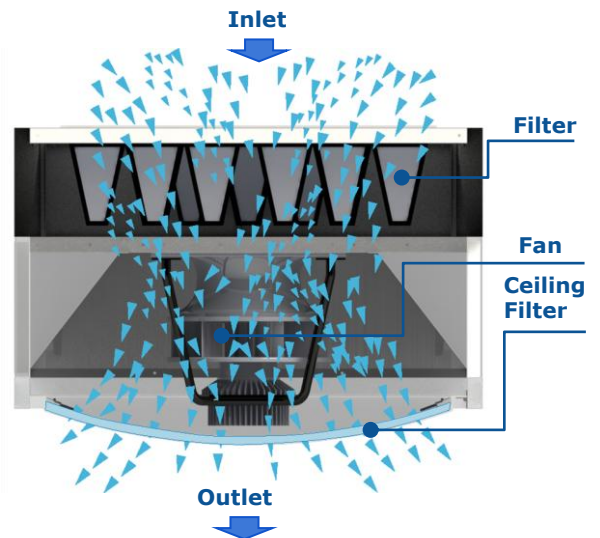


Sample Installation Configuration サンプルの構成

AHU with Temp and humidity control



Air Flow Path 空気の流れ

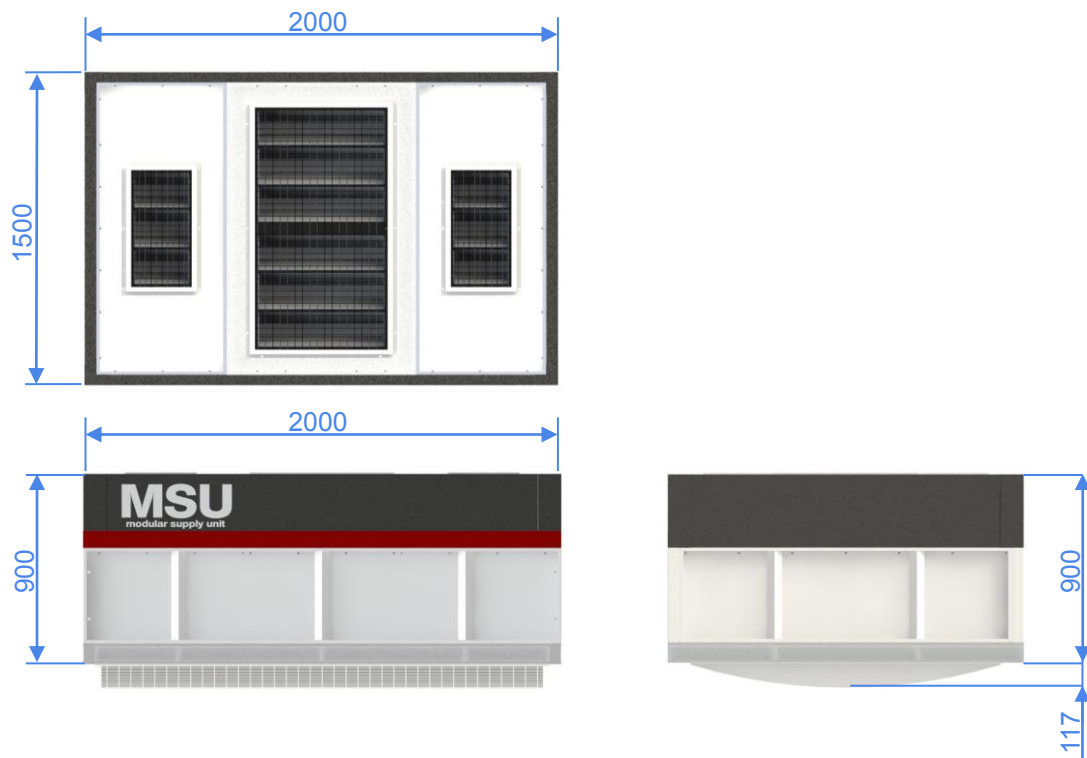


MSU

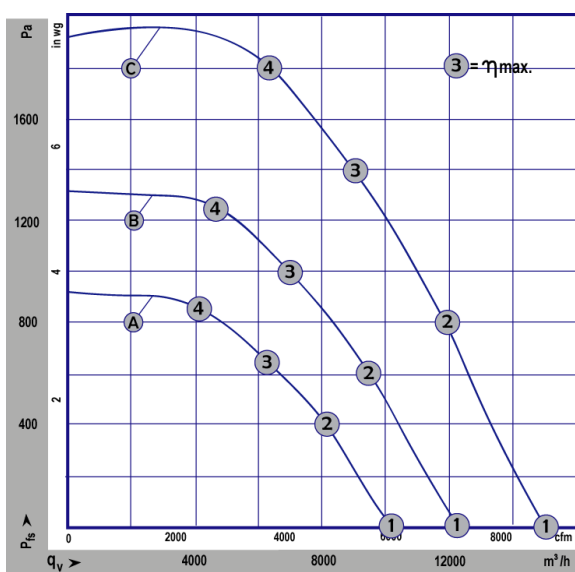
Modular Air Supply Unit

モジュラーエア供給ユニット

MSU Sizing MSU サイズ



Fan Performance Curve ファン性能曲線



	n rpm	P _{ed} kW	I A	L _{wA} dB(A)
(A) ①	1790	1,00	1,61	91
(A) ②	1790	1,53	2,38	82
(A) ③	1790	1,74	2,70	77
(A) ④	1790	1,66	2,57	82
(B) ①	2140	1,71	2,69	96
(B) ②	2140	2,66	4,09	85
(B) ③	2140	2,90	4,50	81
(B) ④	2140	2,76	4,25	86
(C) ①	2600	3,07	4,78	102
(C) ②	2600	4,64	7,13	92
(C) ③	2600	5,25	8,00	87
(C) ④	2600	5,14	7,89	91

Air performance measured according to: ISO 5801, installation category A, with ebm-papst inlet ring without contact protection.
Intake-side sound level: L_{wA} according to ISO 13347, L_{pA} measured at 1 m distance from fan axis. The values given are only applicable under the specified measuring conditions and may differ depending on the installation conditions. In the event of deviation from the standard configuration, the parameters must be checked in installed condition.